

FlashCure 28

FlashCure uses the latest UV lamp technology to provide you with the safest, least expensive UV curing technology on the market today.

In order to provide the optimum power output the lamps should be left on at all times, with the cover open (light shining out). The FlashCure lamps require a 2 to 3 minute warm up time before they reach their maximum output. If they are cool the cure time must be extended by 3 minutes.

In use, the cover is slid closed and the part is placed in front of it.

The resin is applied to the part. Don't be too generous. Put a 1/16" bead around the image area near the edge. Wait for it to spread out, add a little resin if the entire area does not fill.

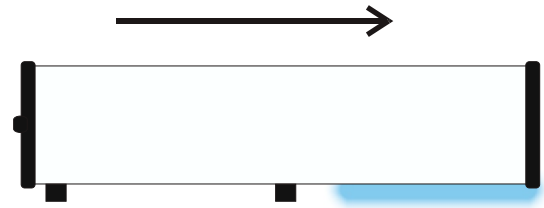
If the resin doesn't flow into every corner use the tip of the applicator to move it gently to the edge.

Now light the bubble remover and wave it about 4" above the part, you are not trying to heat the part or resin, when you will see the bubbles disappear your done.

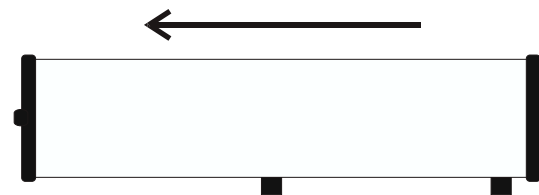
Now slide the cover back over the part. Set your timer to 5 minutes and wait.

Cure time is somewhat based on humidity and temperature, if the humidity is over 50% you may have to increase the cure time by 1 to 3 minutes.

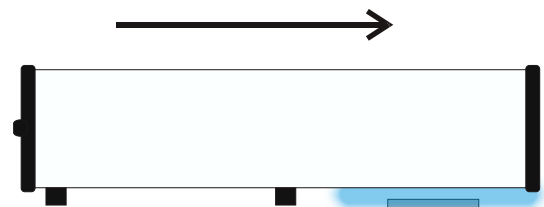
NOTE: Remember your resin is UV sensitive so don't leave it in direct sunlight or under fluorescent lights. Any extra resin supply will keep fresh for up to one year in a refrigerator.



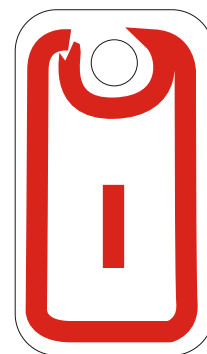
Normal operating position with or without part



Position For doming



Curing position



Typical resin application path